

How to Install and Configure RealOne Player Version 2

This document contains instructions on the following topics:

- Uninstalling newer versions of RealPlayer©
- Downloading and installing RealOne© Player Version 2
- Configuring RealOne© Player for optimal playback

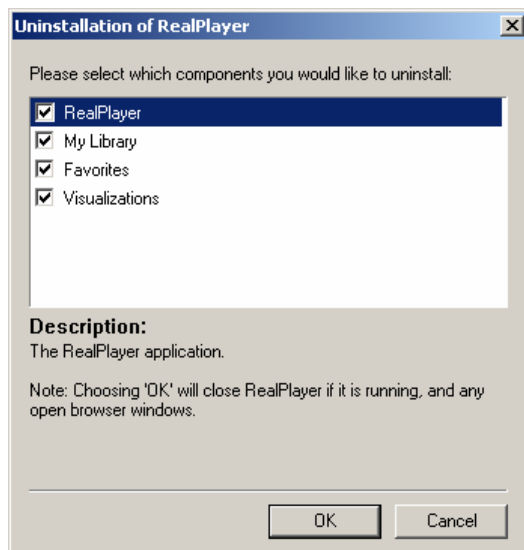
I. Uninstalling newer versions of RealPlayer

If you have a newer version of RealPlayer, it is recommended that you uninstall it completely before installing RealOne Player Version 2. To uninstall RealPlayer:

1. Go to **Start > Programs > Real > Real Player > Uninstall RealPlayer**:



2. You will be prompted to select components to uninstall. Check **all** components:



Click **“OK”**.

RealPlayer will then begin the uninstallation process and inform you when it is complete. You need not restart your computer.

II. Downloading and Installing RealOne Player Version 2

1. Download “RealOne Player Version 2” from the following link:
<http://forms.real.com/real/player/blackjack.html>

Click on “RealOne Player Version 2” under Windows NT 4.0/98/ME/XP/2000:

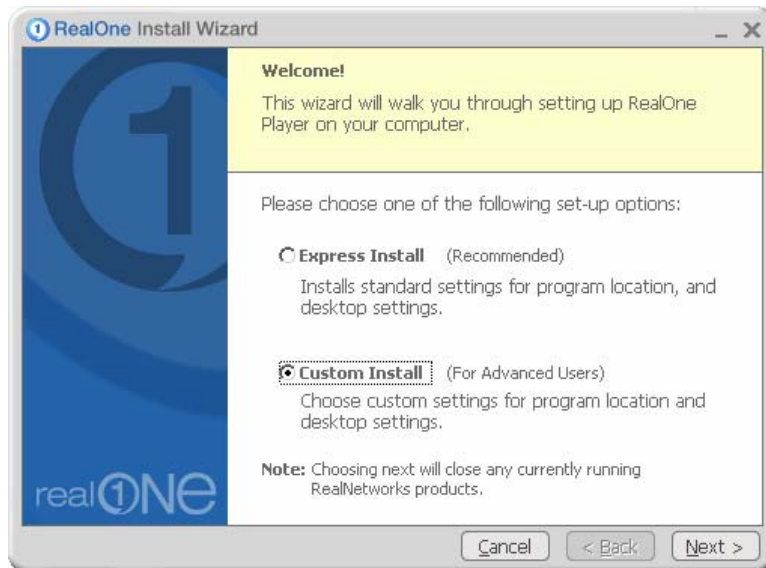


The screenshot shows the Real Legacy Software Archive website. At the top left is the Real logo, and at the top right is the text "Real Legacy Software Archive". Below this is a yellow banner with the text: "Welcome to the free player software archives. Some users have computers that do not meet system requirements for our current player and only older versions will work on their systems." Below the banner is a red note: "Note: These are old versions of our player software and in most cases they are no longer supported. For our latest RealPlayer, click here." The page is divided into two columns. The left column is titled "Windows NT4.0 / 98 /ME / XP / 2000" and lists system requirements for RealPlayer 10, RealOne Player Version 2, RealOne Player Version 1, RealPlayer 8, RealPlayer 7, Real Player G2 (version 6), RealPlayer 5, RealPlayer 4, RealAudio Player 3, RealJukebox 2, and RealJukebox 1. The right column is titled "Mac OSX" and lists "Recommended RealPlayer 10 for Mac OSX system requirements" and "Other Options RealOne Player for Mac OSX system requirements". Below this is a section titled "Mac OS8 or OS9" with "Recommended RealPlayer 8 for Mac system requirements".

If you are asked to *Run* or *Save* the file, select “Save”.

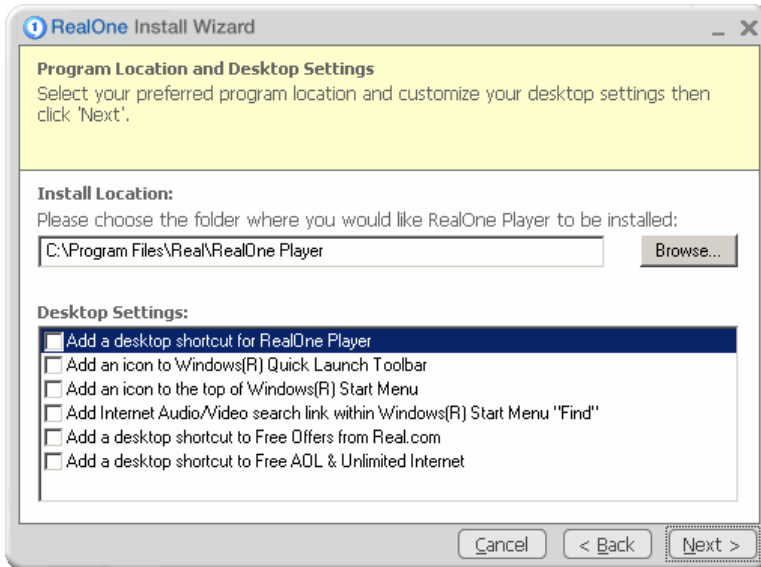
2. After the setup file downloads to your machine, double-click it to start the setup process. You should see the *Welcome!* screen shown below.

We recommend that you opt for the “**Custom Install**”.



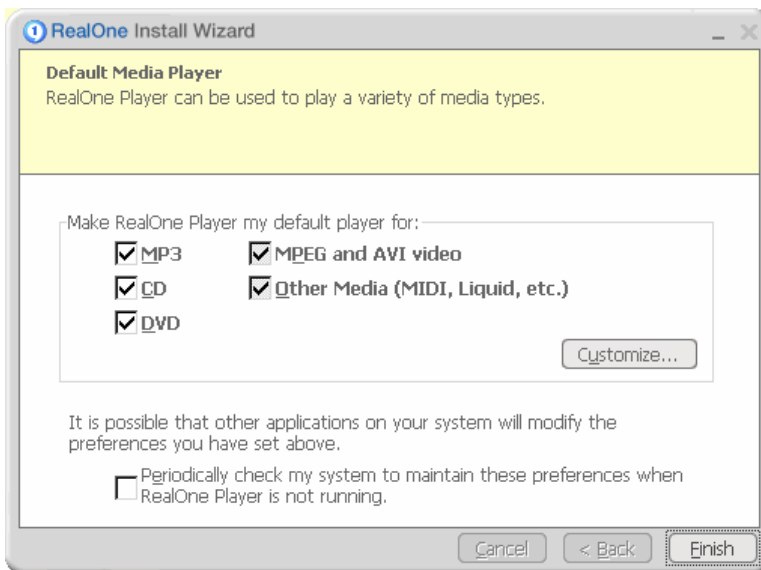
Click “**Next**” to continue.

3. On the *Program Location and Desktop Settings* screen shown below, you may leave the install location as-is and **uncheck** all the desktop settings (if you wish).



Click “**Next**” and wait while RealOne Player installs on your computer.

4. After installation completes, you will see the *Default Media Player* screen shown below. Feel free to leave the default settings or modify them to your preference.

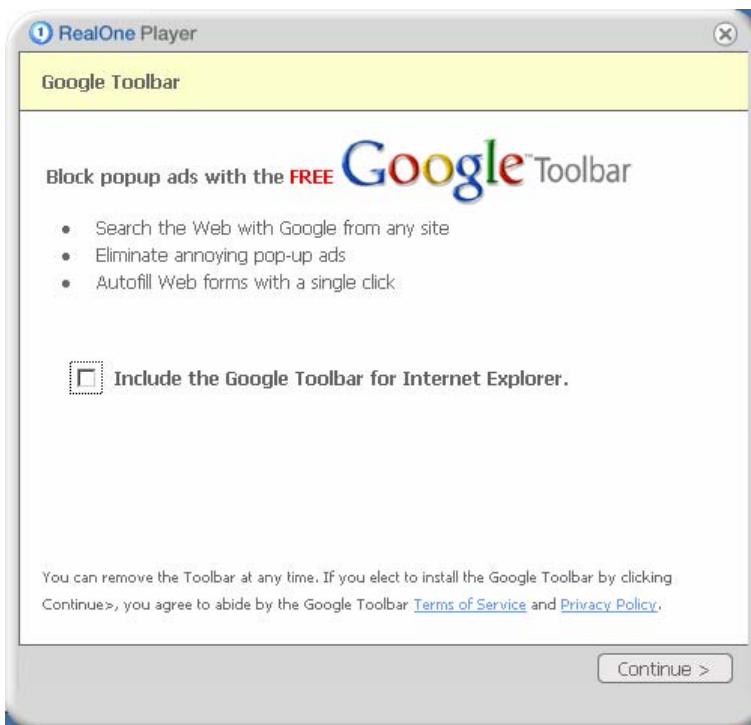


Click “**Finish**”. The player will then start.

5. The *RealOne Welcome* screen will be shown. Click “**Next**” to continue.

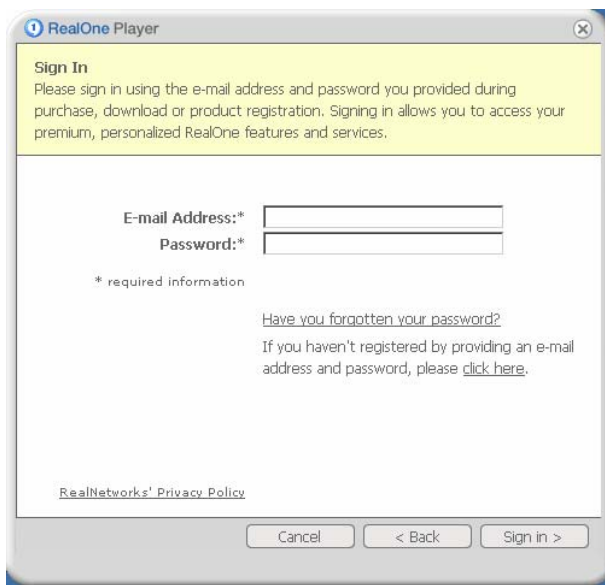


6. You may be asked whether you would like to install the *Google Toolbar*. Please note that the Google Toolbar is **NOT necessary** for playback of IIT Online Internet lectures.



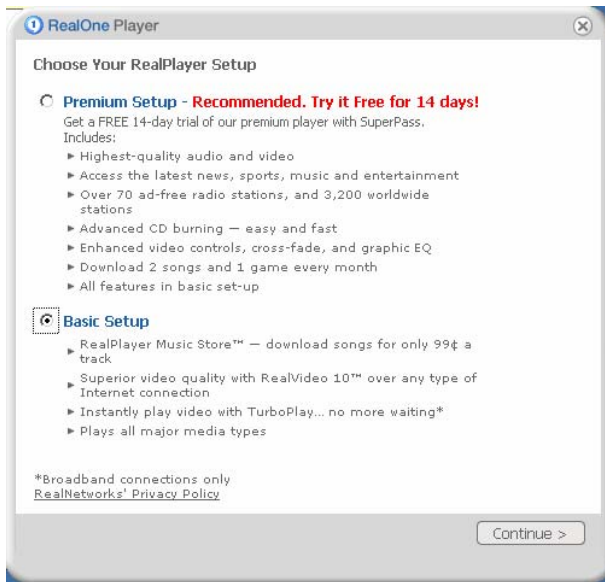
Click “**Continue**” after choosing whether to install the toolbar or not.

7. You will be prompted to provide your RealNetworks Sing-In information. If you have registered with RealNetworks before, provide the email address and password you used.



If you haven't registered with RealNetworks, use the "click here" link provided below the password field. Please note that RealOne Player requires registering with RealNetworks to function (this registration is not sent to or necessitated by Illinois Institute of Technology).

8. After signing-in or registering with RealNetworks, you will be then prompted to select the Premium (paid) or Basic (free) version of RealOne Player. Please note that the **Basic Setup is sufficient** for playing IIT Online Internet lectures.



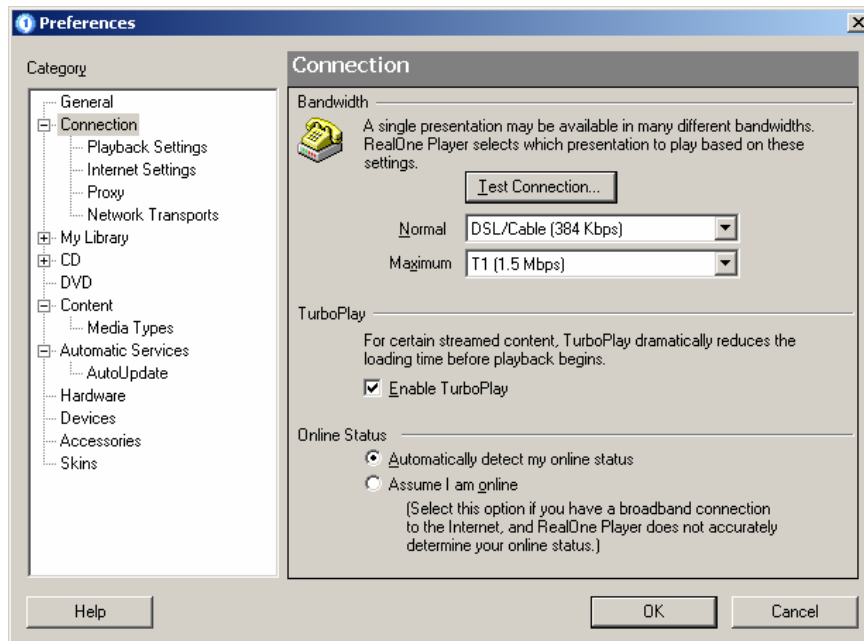
Click "**Continue**". You should see the demo clip played by RealOne Player:

III. Configuring RealOne® Player for Optimal Playback

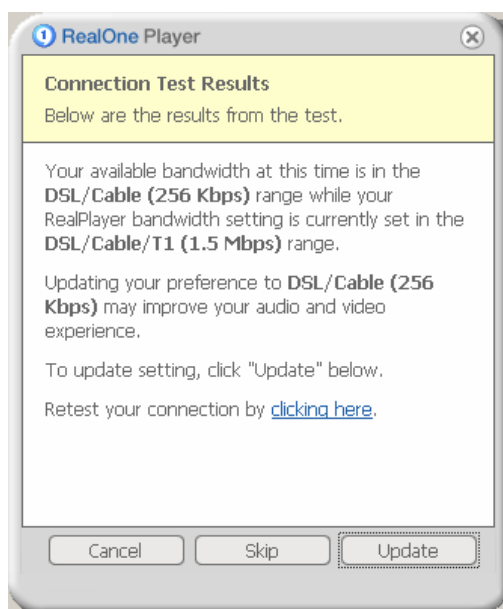
1. Configuring RealOne Player's connection settings

IIT Online recommends that you perform an automatic adjustment of the RealPlayer connection settings by following these steps:

- In RealOne Player, go to **Tools > Preferences**.
- Click the **"Connection"** category.
- Click **"Test Connection"** and then **"Perform Test"** in the new window.



If RealOne Player detects a discrepancy in your settings, it will show the *Connection Test Results* as illustrated below. Click **"Update"** to let RealOne adjust the settings.



Please note:

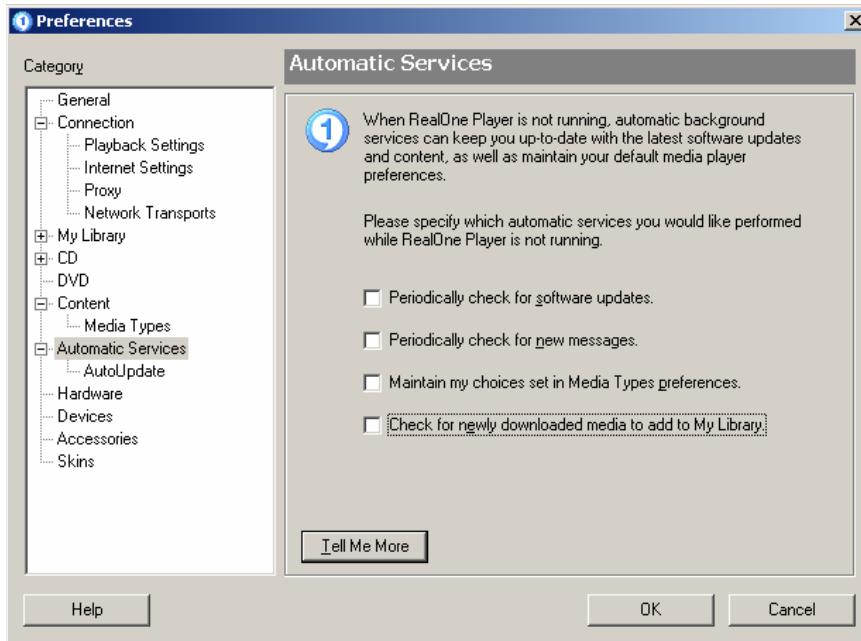
It is recommended that the **Normal** and **Maximum** bandwidth settings are **at least "DSL/Cable (384 Kbps)"** if you are using a broadband connection. If the Connection Test set them to anything lower, we recommend raising them to "DSL/Cable (384 Kbps)".

2. Configuring RealOne player to disable automatic updating

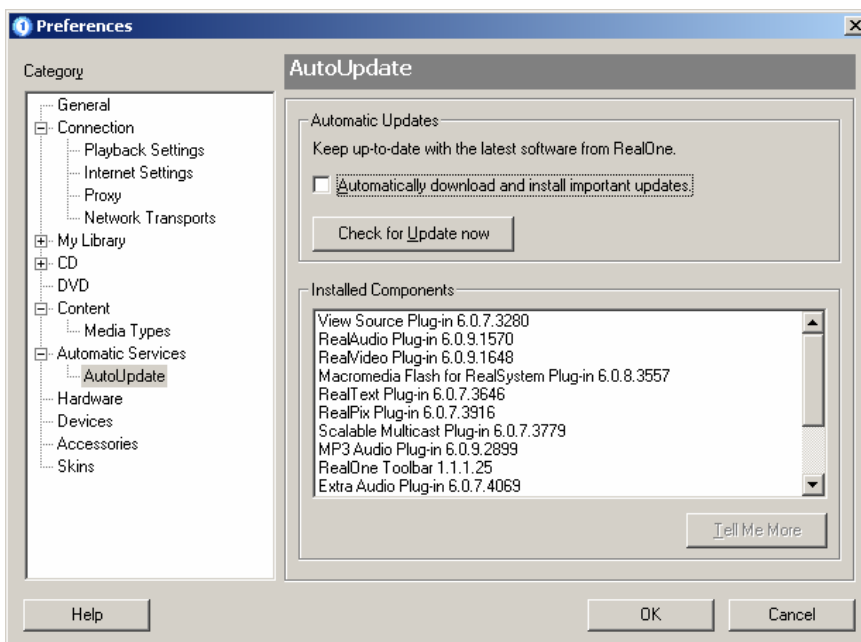
RealOne Player may prompt you to update it to a newer version. At this time, IIT Online recommends that you do not update to versions higher than RealOne Version 2 until we can verify that the newer versions perform at the same or better level.

Follow these steps to disable automatic updating of RealOne Player:

- In RealOne Player, go to **Tools > Preferences**.
- Click the **“Automatic Services”** category.
- Uncheck all boxes as shown below:



- Click the **“AutoUpdate”** category.
- Uncheck **“Automatically download and install important updates”**:



3. Hiding the Media Browser window

If you would like to disable the advertisements shown in the RealOne Media Browser window, follow these steps:

- a. In RealOne Player, go to **Tools > Preferences**.
- b. Click the **“General”** category.
- c. Change “On startup display” to **“Player only (no Media Browser)”**.

